

Art Number
WL111181

Model
25W



Features

- WISDOM adopts high lumen SMD LED & PC diffuser with even light output.
- Deep housing design helps to reduce the glare
- ADC12 aluminum profile provides better heat resistance and corrosion resistance
- Offering 90° wide beam angle-high lumen efficiency
- Available in interchangeable CCT with slide switch version
- Lifespan is up to 50,000 hrs
- Available version in Emergency and dimmable with triac
- Easy to install, use stainless steel spring, safe and durable
- IP44 waterproof for front side.

Product Specification

LED Chip	HIGH LUMEN SMD LED
Power	25W
Input	220-240VAC Remote Driver
Output	2610lm(3K)/ 2740lm(4K)/ 2880lm(5K)
CCT	3000K(30)/ 4000K(40)/ 5000K(50)
LED Type	SMDLED
Power Factor	PF>0.9
Protection Class	Class II

Technical Data

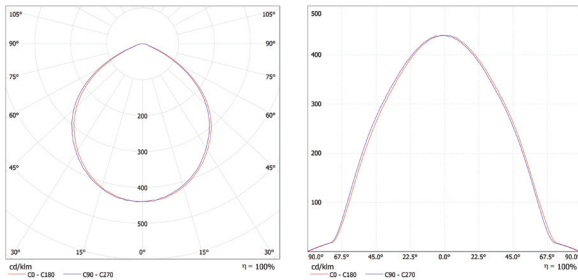
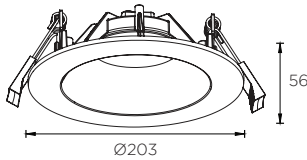
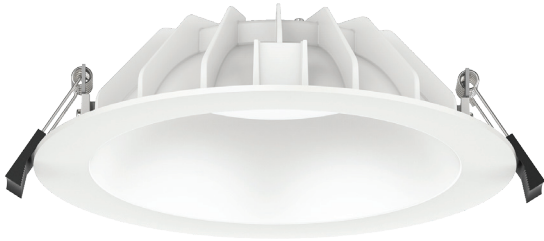
IP Rating	IP44
Housing/ Front Cover	ADC12 Aluminum
Finishing	White(02)/ Black(04)
Diffuser	PC diffuser
Power Cable	H05RN-F 3x0.75 mm ² / L=0.5m
Mounting Sleeve	Stainless steel spring
Cutout	Ø175mm
Weight	0.65Kg
Package	12pcs/CTN

Photometric Data

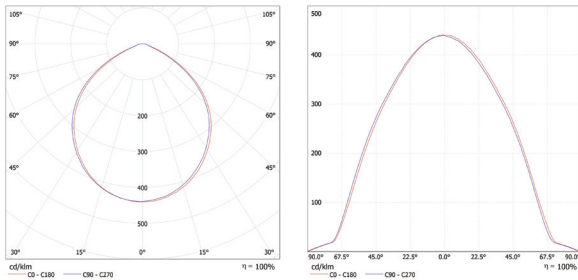
CRI	80
Luminous Efficacy	104lm/W
Beam Angle	90°(90)
Operating Temp.	-20°C~+50°

Order Code Example

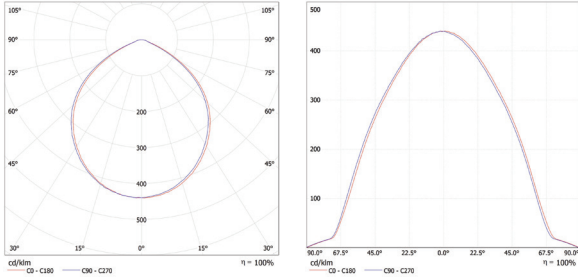
Artnumber	Finish	Beam Angle	Color Temp
WL111180	WH(02)	90°(90)	3000K(30)
WL111180.02.90.30			



90° 3000K



90° 4000K



90° 5700K