

Art Number
WL111179

Model
13W



Features

- WISDOM adopts high lumen SMD LED & PC diffuser with even light output.
- Deep housing design helps to reduce the glare
- ADC12 aluminum profile provides better heat resistance and corrosion resistance
- Offering 90° wide beam angle-high lumen efficiency
- Available in interchangeable CCT with slide switch version
- Lifespan is up to 50,000 hrs
- Available version in Emergency and dimmable with Triac
- Easy to install, use stainless steel spring, safe and durable
- IP44 waterproof for front side.

Product Specification

LED Chip	HIGH LUMEN SMD LED
Power	13W
Input	220-240VAC Remote Driver
Output	1355lm(3K)/ 1422lm(4K)/ 1490lm(5K)
CCT	3000K(30)/ 4000K(40)/ 5000K(50)
LED Type	SMDLED
Power Factor	PF>0.9
Protection Class	Class II

Technical Data

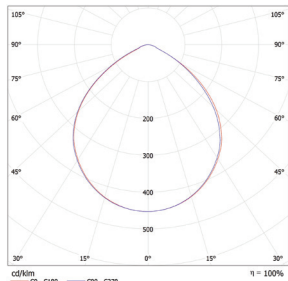
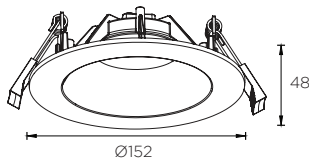
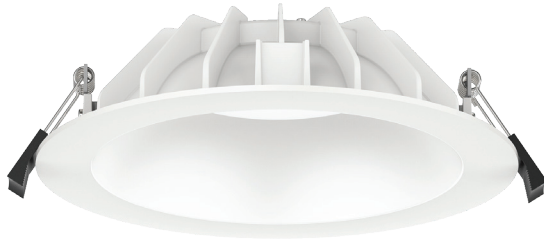
IP Rating	IP44
Housing/ Front Cover	ADC12 Aluminum
Finishing	White(02)/ Black(04)
Diffuser	PC diffuser
Power Cable	H05RN-F 3x0.75 mm ² / L=0.5m
Mounting Sleeve	Stainless steel spring
Cutout	Ø125mm
Weight	0.45Kg
Package	24pcs/CTN

Photometric Data

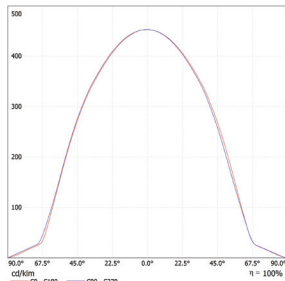
CRI	80
Luminous Efficacy	104lm/W
Beam Angle	90°(90)
Operating Temp.	-20°C-+50°

Order Code Example

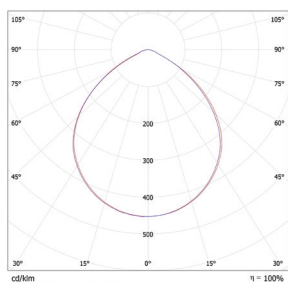
Artnumber	Finish	Beam Angle	Color Temp
WL111180	WH(02)	90°(90)	3000K(30)
WL111180.02.90.30			



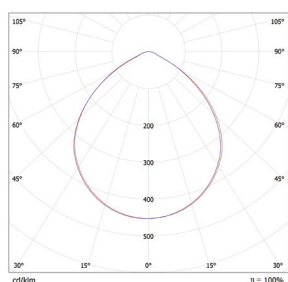
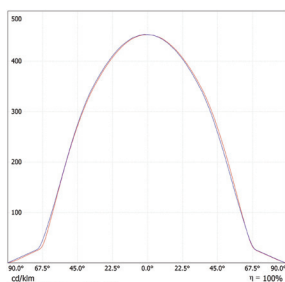
90° 3000K



90° 4000K



90° 5700K



90° 5700K