



WILMAR INTERNATIONAL COMPANY PROFILE

WILMAR INTERNATIONAL LLC

ARCHITECTURAL LIGHTING

Wilmar International has been incorporated in USA by a consortium of highly qualified, skilled professionals who bring in tremendous experience in electrical, electronics and lighting designs to offer energy efficient solutions based on technological evolution for power distribution, lighting, controls and automation needs of infrastructure, industrial, commercial and residential building segments in line with international standards.

Acquisitions of companies of global repute and well established associations with technology partners from various geographies have helped **Wilmar** International to increase resources for development of products, geographical reach, and customer base and strengthen manufacturing activities specific to local markets for providing products of global repute. This globalization approach fulfils our aim of serving clients promptly with quality

products of global repute. This has also influenced our initiative to expand manufacturing facility for distribution range of products through our group company **Wilmar** Electrical Industries. This state of the art production facility has helped in improving delivery lead times of finished products in compliance with design specifications and quality standards followed internationally.

As a manufacturer of energy efficient premium quality LED lighting fittings, **Wilmar** showcases well-designed selection of lighting products (Ceiling recessed & surfaced lights, Track lights, Pendant lights, Panel lights, In ground light, Flood light, Bollard light, Street & Pole lights, Underwater lights, Projector lights and Strip Light) for various application which include Commercial, Retail, Landscape, Architectural, Industrial, Street, Façade and Hospitality Lighting.





“WILMAR is **constantly** in the process of building up a reputation for **high quality**, well **designed** and **innovative** products backed by **efficient and reliable** service.”

OUR VALUES

INNOVATION

Quality assurance being the top priority of our organization, strict quality control measures and processes are followed at our factory starting from raw material procurement to delivery of final products meeting client's needs. Our network for after sales services extends support during installation, testing and commissioning of products supplied by us.

QUALITY

Our excellence center is equipped with high end testing, measuring and monitoring equipment to carry out checks and tests on products during its developmental stages enabling us to derive optimum design criteria for final product, keeping in view requirements of our end users.

COMMITMENT

Our commitment to add value in projects has made us a partner of choice and we endeavor to excel in our services to clients for achieving their satisfaction and continued patronage.



MAGNETIC RANGE

AREAS OF EXPERTISE

**ARCHITECTURAL &
LANDSCAPE LIGHTING**

**COMMERCIAL &
RETAIL LIGHTING**

**INDUSTRIAL &
STREET LIGHTING**

WILMAR 

AMBIENT LIGHTING

FACADE LIGHTING

**SUPERMARKET &
HYPERMARKET LIGHTING**

APPROVALS & REGISTRATIONS



KSA



وزارة التعليم
Ministry of Education

KSA



وزارة الداخلية
المملكة العربية السعودية

KSA

هيئة كهرباء ومياه دبي
Dubai Electricity & Water Authority



DUBAI

بلدية دبي
DUBAI MUNICIPALITY



DUBAI



DUBAI

||| MERAAS

DUBAI



DUBAI

أدنوك
ADNOC



ABU DHABI

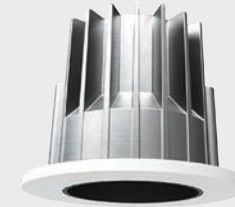


شروق
SHUROOQ

SHARJAH

PRODUCT RANGE

ARCHITECTURAL CEILING LIGHTS



“As a manufacturer of energy efficient premium quality LED lighting fittings, Wilmar showcases well curated selection of lighting products for various application.”



COMMERCIAL CEILING LIGHTS



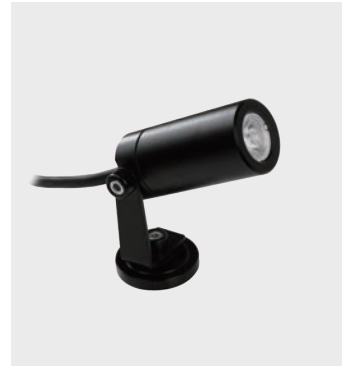
TRACK LIGHTS



ARCHITECTURAL FLOOD & PROJECTOR LIGHTS



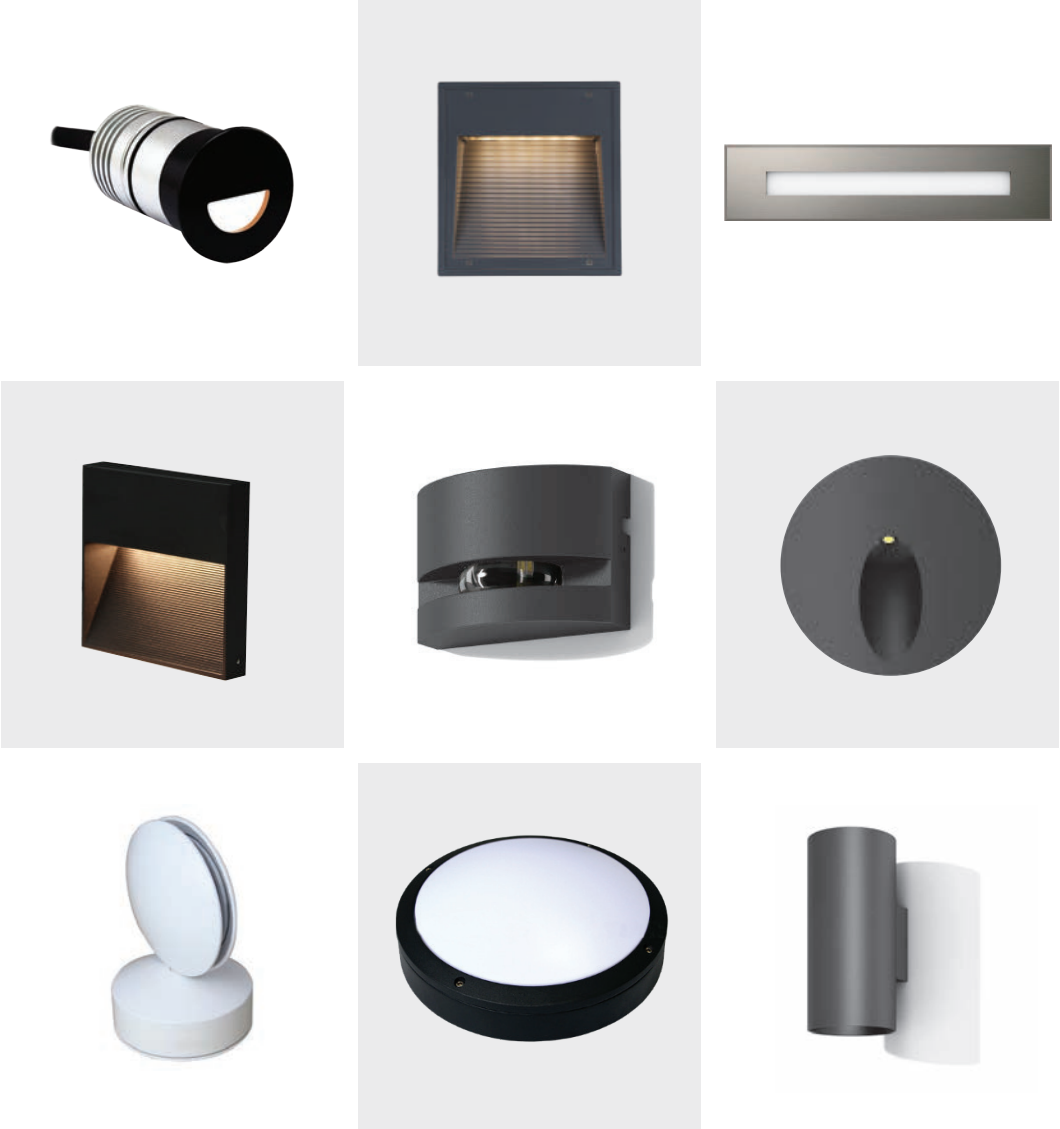
GARDEN & SPOT LIGHTS



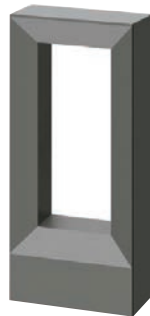
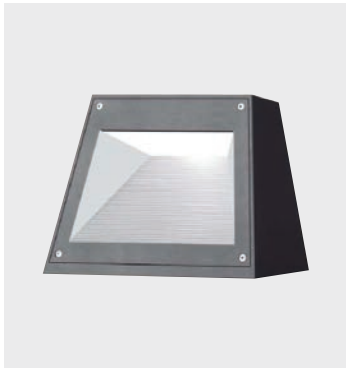
INGROUND & UNDERWATER LIGHTS



WALL LIGHTS



BOLLARD LIGHTS



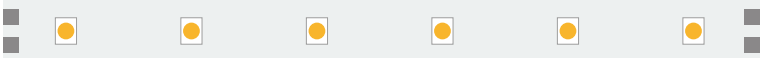
POLE & STREET LIGHTS



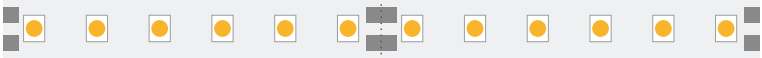
INDUSTRIAL LIGHTS



STRIP LIGHTS



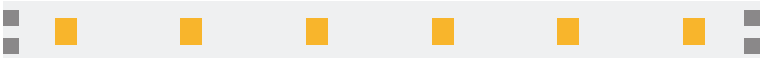
SMD 3528 60LED



SMD 3528 120LED



SMD 2835 30LED



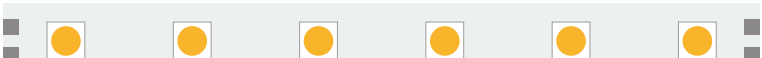
SMD 2835 60LED



SMD 2835 120LED



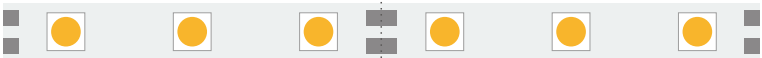
SMD 2835 240LED



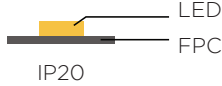
SMD 5050 60LED



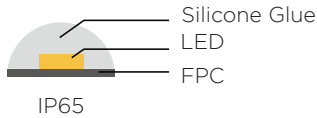
SMD 5050 60LED RGBW



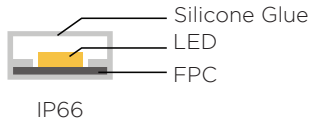
SMD 5050 120LED



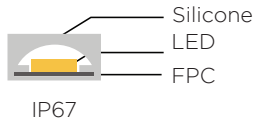
IP20



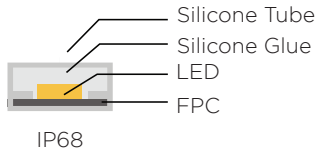
IP65



IP66



IP67



IP68

MAGNETIC TRACK LIGHTS



SUPERMARKET LIGHTS



MAJOR PROJECTS



AIRPORT-MUSCAT



ST.REGIS SAADIYAT
ISALAND RESORT-ABU DHABI



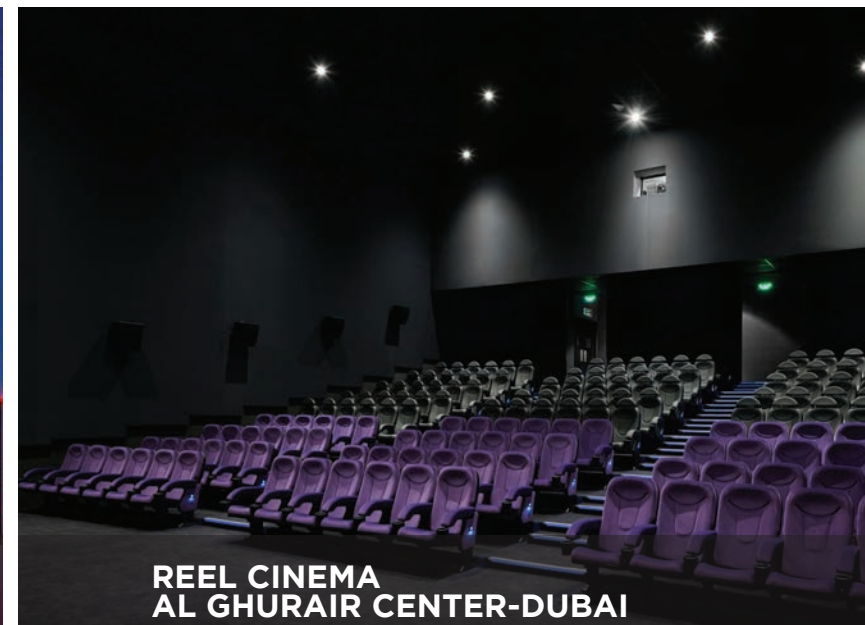
LE MERIDIAN-MAURITIUS



AL HUZAIFA FURNITURE-DUBAI



MARRIOT HOTEL
APARTMENTS-DUBAI



REEL CINEMA
AL GHURAIR CENTER-DUBAI

MAJOR PROJECTS



CITY WALK-DUBAI



**SAADIYATH POLICE
STATION-ABU DHABI**



**WATER EDGE
YAS ZONE-ABU DHABI**



SPS CITY WALK-DUBAI



**LEGOLAND KINGDOM
CASTLE-DUBAI**



**SHIEKH HAMDAN
AWARD BUILDING-DUBAI**

MAJOR-PROJECTS



**TOWER 9
PENTHOUSE-DUBAI**



**AL BATHA TOWER
-DUBAI**



**JVC RESIDENTIAL
-DUBAI**



**THE PAD BUSINESS
BAY-DUBAI**



**STUDIO ONE
TOWER-DUBAI**



**MARINA GATE 2
-DUBAI**

MAJOR-PROJECTS

LIST OF OTHER PROJECTS AT A GLANCE

- 1) IMAM SAUD UNIVERSITY -*KSA*
- 2) IMAM SAUD TAMIMI MARKETS -*KSA*
- 3) ANTARA HOUSING -*KSA*
- 4) CHUNK RESTAURANT -*KSA*
- 5) MANKHOOOL HOTEL -*UAE*
- 6) AL NUDRA VILLAS -*UAE*
- 7) AL MARYAH CENTRAL -*UAE*
- 8) DUBAI MARINE INFILL -*UAE*
- 9) METROPOLITAN HOTEL -*UAE*
- 10) AL AHLI CLUB & STADIUM -*UAE*
- 11) DM PARK -*UAE*
- 12) MANDARIN ORIENTAL JBR -*UAE*
- 13) GEMS SCHOOL -*UAE*
- 14) DUBAI SPORTS CLUB -*UAE*
- 15) FRUITS & VEGITABLE MARKET -*UAE*
- 16) SHARAF DG MANKHOOOL -*UAE*
- 17) MG-2 PENTHOUSE AND VILLAS -*UAE*
- 18) NO.9 DUBAI MARINA -*UAE*
- 19) SUBSTATION BCSS -*UAE*
- 20) ADIA M90/7 SECURITY GATE -*UAE*
- 21) EO MAJLIS PROJECT -*UAE*
- 22) DRY PORT DUBAI CUSTOMS -*UAE*
- 23) DHOFAR AUTOMOTIVE, WATTAYAH -*OMAN*
- 24) HOME BAKERY SHOP -*UAE*
- 25) FAKIH MEDICAL CENTER -*UAE*
- 26) DEWA PROJECTS -*UAE*
- 27) RUWAIS HOUSING COMPLEX -*OMAN*
- 28) AL MAMZAR CENTER -*UAE*
- 29) BANK OF BEIRUT -*UAE*
- 30) AL7 VILLAS -*UAE*
- 31) SPECIAL ECONOMIC ZONE DUQUM -*OMAN*
- 32) TOWN HOUSE IN MSQ -*UAE*
- 33) HM'S CLINIC, BAITH AL BARKA -*UAE*
- 34) MARRIOT HOTEL & APARTMENT -*KSA*
- 35) CCC HQ BUILDING -*UAE*
- 36) RGP MUSIC HALL -*OMAN*
- 37) ROYAL GUARD OF OMAN -*OMAN*
- 38) NATIONAL BANK OF OMAN -*OMAN*
- 39) CIVIL DEFENCE STATION -*UAE*
- 40) DUBAI MUNICIPALITY CHILDREN PLAY GROUND -*UAE*
- 41) REFURB. OF VILLA IN ZABEEL PALACE -*UAE*
- 42) ARMED FORCE OFFICERS CLUB -*UAE*
- 43) JOUZZY OFFICE -*UAE*
- 44) OBAID AL MUTAWEI PRIVATE RESIDENCE -*UAE*
- 45) SHINDAGHA MUSEUM -*UAE*


THANK YOU



WILMAR INTERNATIONAL
Headquarter
F108 West 13th Street Wilmington
New Castle, USA

www.wilmarintl.com | info@wilmarintl.us

Regional Office: Middle East
Wilmar International LLC
Dubai, UAE
Tel No: +971 4 5149633
Fax No: +971 4 5144337

 [/wilmarintl/](https://www.facebook.com/wilmarintl/)
 [/company/wilmar-int](https://www.linkedin.com/company/wilmar-int/)
 [/wilmarintl_inc](https://twitter.com/wilmarintl_inc)
 [/wilmar_international/](https://www.instagram.com/wilmar_international/)
 [/wilmar_international/](https://www.pinterest.com/wilmar_international/)